

Public Document Pack



MEETING:	Health and Wellbeing Board
DATE:	Tuesday, 7 June 2016
TIME:	4.00 pm
VENUE:	Reception Room, Barnsley Town Hall

AGENDA

- 6 Draft Refreshed Health and Wellbeing Strategy - initial consultation (Presentation) (HWB.07.06.2016/6) *(Pages 3 - 14)*
- 10 BMBC Housing Strategy (Presentation) (HWB.07.06.2016/10) *(Pages 15 - 28)*

To: Chair and Members of Health and Wellbeing Board:-

Councillor Sir Steve Houghton CBE, Leader of the Council (Chair)
Councillor Jim Andrews BEM, Deputy Leader
Councillor Margaret Bruff, Cabinet Spokesperson - People (Safeguarding)
Councillor Jenny Platts, Cabinet Spokesperson - Communities
Diana Terris, Chief Executive
Rachel Dickinson, Executive Director People
Wendy Lowder, Interim Executive Director Communities
Julia Burrows, Director Public Health
Nick Balac, NHS Barnsley Clinical Commissioning Group
Lesley Smith, NHS Barnsley Clinical Commissioning Group
Tim Innes, South Yorkshire Police
Emma Wilson, NHS England Area Team
Adrian England, HealthWatch Barnsley
Steven Michael OBE, South West Yorkshire Partnership NHS Foundation Trust
Richard Jenkins, Barnsley Hospital NHS Foundation Trust

Please contact Peter Mirfin on 01226 773147 or email governance@barnsley.gov.uk

This page is intentionally left blank

Barnsley Health & Wellbeing Strategy Refresh



2016 – 2019

Progress to Date

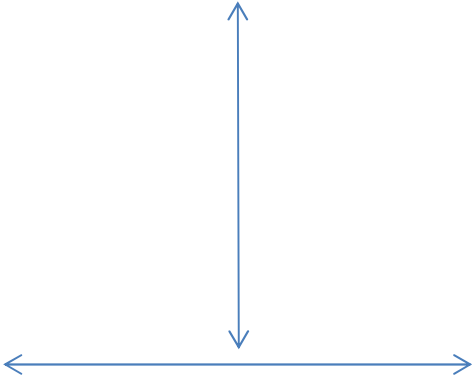
Stakeholder Engagement & Consultation



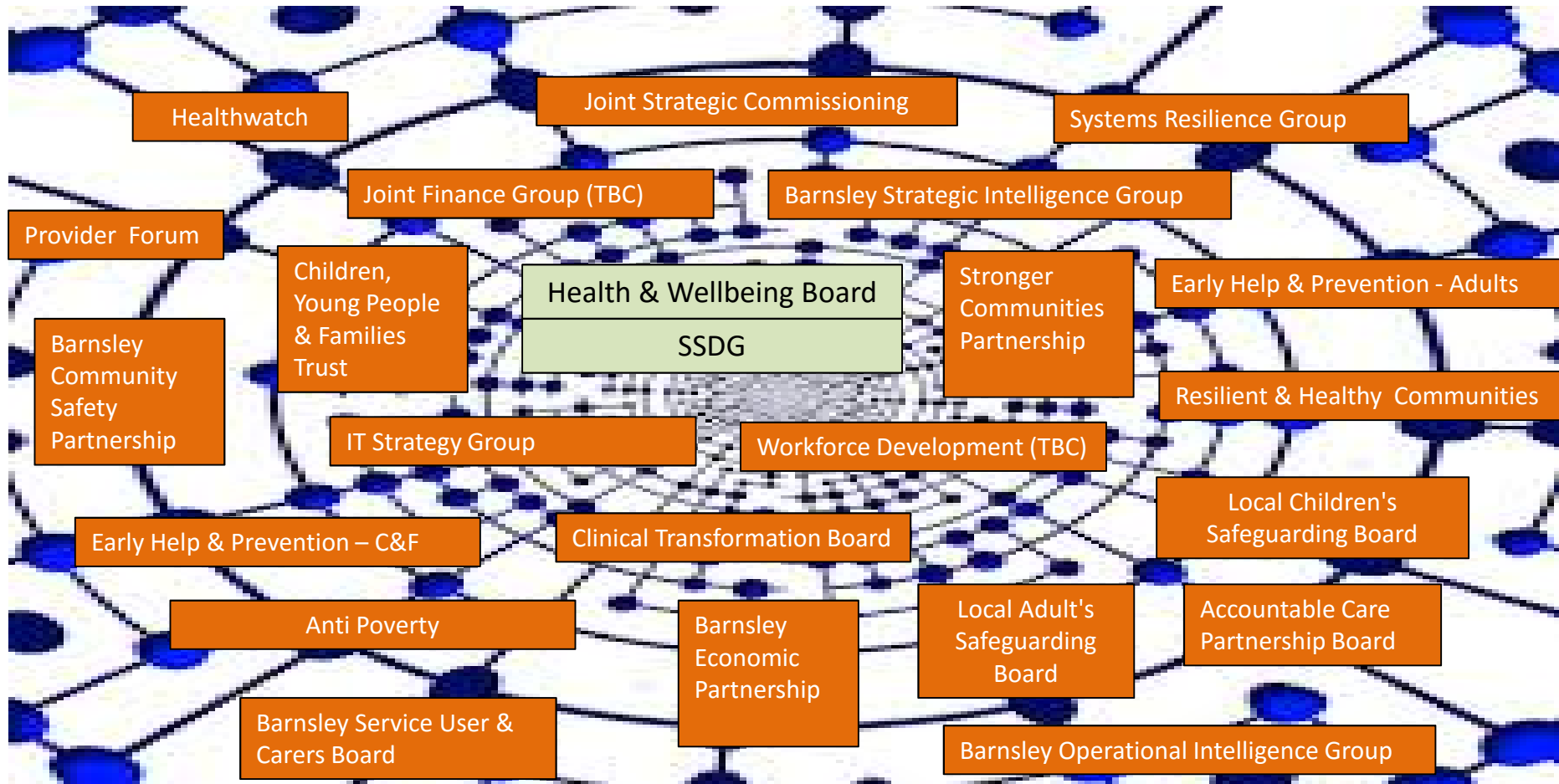
Landscape & Context



Vision & Framework



Health & Wellbeing System



Enabling Strategies & Plans

Barnsley's Local Integrated Place Base Plan	Public Health Strategy	Early Help Strategy	Mental Health Strategy	Clinical Commissioning Strategy
Children & Young People's Plan	Clinical Commissioning Intentions	Adult Social Care Commissioning Intentions		South Yorkshire & Bassetlaw's Sustainability & Transformation Plan
Community Safety Strategy	Barnsley's Health & Wellbeing Strategy			Transforming Care Partnership Plan for Learning Disabilities
Alcohol Harm Reduction Strategy				Employment & Skills Strategy
Children's Services Continuous Service Improvement Plan	Barnsley Special Educational Needs & Disability Strategy	Barnsley Housing Strategy	Older People's Strategy	
	Smoke Free Barnsley Tobacco Alliance Action Plan			Falls Strategy
Sports & Active lifestyles	Barnsley Homelessness Strategy	Local Account of Adult Social Care	The Local Plan (Regeneration)	
Anti- Poverty Strategy	Volunteering Strategy	Annual Report of the Barnsley Local Safeguarding Adult Board		

The Challenge

			
<p>Aging Population</p>	<p>Multiple LTC</p>	<p>Informal Carers</p>	<p>Care closer to Home</p>
			
<p>39th Most Deprived</p>	<p>Cold/Damp housing</p>	<p>Social Isolation</p>	<p>Long term sick</p>
			
<p>Unemployment</p>	<p>Vulnerable Groups</p>	<p>Early development</p>	<p>Lifestyle choices</p>

Vision

People of Barnsley are enabled to take control of their health & wellbeing and enjoy happy, healthy and longer lives, in safer and stronger communities, regardless of who they are and wherever they live.

Principles

A new relationship with residents

Working as One borough

Build on strengths

A relentless drive for efficiencies and outcomes

Strategic Objectives

Prioritise Prevention & Early Help



Ensure System Resilience

Accelerate System Enablers



Embed a Culture of Integrated Services

Outcomes

Children start life healthy and stay healthy

People live longer, healthier lives

People live in strong and resilient families and communities

A stronger economy & healthier workforce

People have improved mental health and wellbeing

Health inequalities are reduced

Principles

A new relationship with residents



Building on Strengths



A relentless drive for efficiencies and outcomes

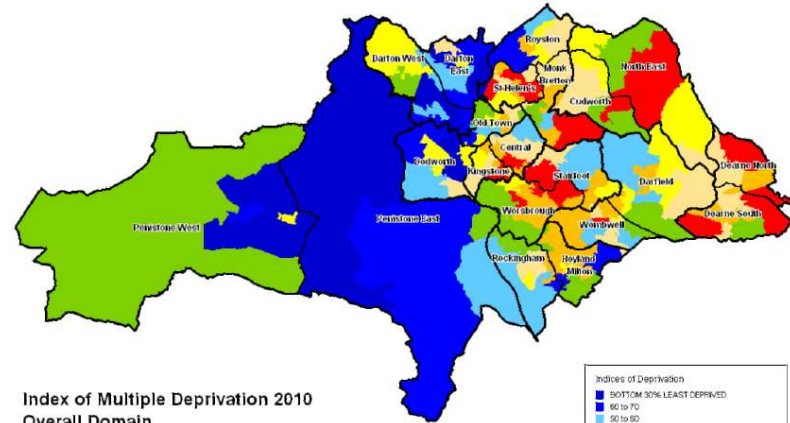
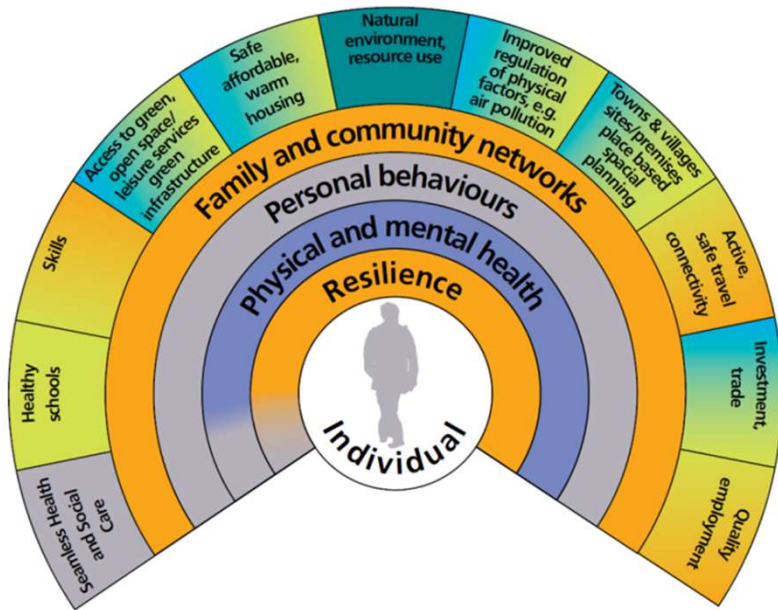


Working as One borough



Strategic Objectives

Prioritise Prevention & Early Help



Index of Multiple Deprivation 2010
Overall Domain
Barnsley Borough SOAs by
English Decile

Indices of Deprivation

Blue	BOTTOM 30% LEAST DEPRIVED
Light Blue	30 to 40
Yellow	40 to 50
Orange	50 to 60
Red	60 to 70
Dark Red	TOP 10% MOST DEPRIVED

Reproduced from the Indices of Deprivation 2010 mapping with the permission of the Controller of Her Majesty's Stationery Office. Unauthorised reproduction is prohibited. Please contact HMSO for more information on this product. © Crown copyright. Barnsley, 2010. Licence Number 14550002504, 1993.



Ensure System Resilience

Strategic Objectives

Accelerate System Enablers



Embed a Culture of Integration



Outcomes

Children start life healthy and stay healthy

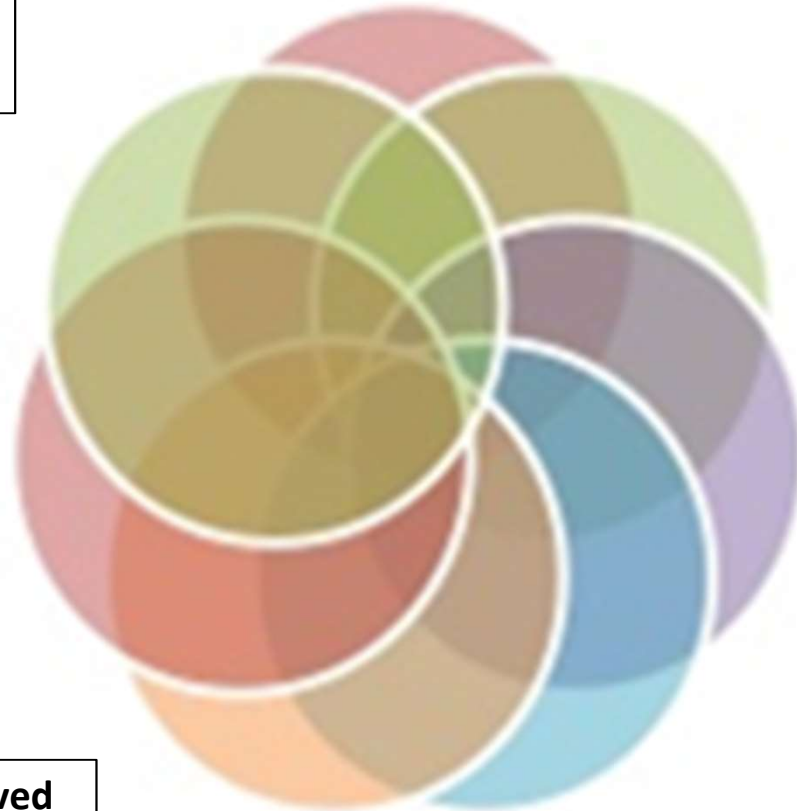
A Stronger Economy & Healthier Workforce

People live longer, healthier lives

Health inequalities are reduced

People have improved mental health and wellbeing

People live in strong and resilient families and communities



Next Steps

- Continued engagement with stakeholders
- Public Consultation Workshop – 21st June
- Identify / agree outcome indicators
- Period of Consultation – July/August
- Final Draft – August/September
- H&WBB Work Programme

This page is intentionally left blank

Barnsley Housing Strategy & Delivery Plan Update 2015/16



Housing Strategy



- National Policies and Strategies
- Corporate Plan
- Housing, Health and Wellbeing
- Strategic Housing Studies
- New Local Plan



Key Objectives

1. To support new housing development which creates a thriving and vibrant economy
2. To ensure the design and delivery of new high quality, desirable and sustainable homes
3. To make best use of/improve existing housing stock in Barnsley
4. To develop strong, resilient communities
5. To support younger, older and vulnerable people to live independently



A New Strategic Framework for Housing



1. To support new housing development which creates a thriving and vibrant economy

- Boost the supply of new homes to meet increasing demand
- Work with developers to make housing developments more economically viable
- Enable more people to buy homes on the open market
- Explore new funding delivery models to increase housing supply
- Work with partners to deliver more affordable housing
- Increase new build private rented homes to meet growing demand



Strategy Ambitions:

- *Build c.20,000 – 25,000 new homes*
- *Build 1,070 new homes per year*
- *Build c.150 affordable homes per year*
- *Increase supply of private rented homes*



2. To ensure the design and delivery of new high quality, desirable and sustainable homes

- Increase the number of larger (4 & 5 Bed) family / higher value homes
- Improve the range and quality of homes available to meet the changing needs of our residents
- Reduce carbon emissions from use of new housing
- Raise standards in the design and build quality for all new homes



Strategy Ambitions:

- *Build c.2,500 larger family / higher value homes*
- *Build c.500 homes for older & vulnerable people*
- *Achieve 15% Renewable Energy on new builds*



3. To make best use of improve existing housing stock in Barnsley

- Continue with a sustainable approach to maintaining council housing
- Help social tenants move to more suitable accommodation that meets their needs
- Reduce the number of homes that are empty for longer than 6 months
- Improve housing conditions and management standards in the private rented sector
- Improve energy efficiency of existing housing (through Better Homes Barnsley scheme)



Strategy Ambitions:

- *Maintain 100% of Council stock to Barnsley Homes Standard*
- *Bring c.300 long term empty homes back into use for affordable housing*
- *Eliminate Category 1 Hazards in private rented properties*
- *Improve the energy efficiency of up to 1,500 private sector homes*



4. To develop strong, resilient communities

- Provide early targeted support for households and families facing multiple problems
- Ensure that social housing is allocated fairly and provides homes to households most in need
- Give people a greater say in developing and delivering housing services
- Reduce the impact that poor housing has on health and well-being
- Address any barriers that may be hindering anyone from accessing suitable housing



Strategy Ambitions:

- *Deliver the Masterplan for Goldthorpe & the Wider Dearne*
- *Maximise customer profile data using CRM to target intervention*
- *Achieve 50% success rate for families on the Troubled Families programme*
- *Reduce number of households in fuel poverty*



5. To support younger, older and vulnerable people to live independently

- Improve the range and options of supported accommodation
- Support young people to access housing and live independently
- Provide more choice and options to help vulnerable and older people live independently in their homes
- Ensure all people with learning disabilities previously placed outside of Barnsley are supported in affordable housing within the Borough
- Prevent and reduce homelessness through early intervention



Strategy Ambitions:

- Remodel accommodation and support for young people and develop a robust pathway
- Ensure extra care provision to ensure is fully integrated into the wider health and care pathways
- Access aids and adaptations across all tenures



Delivering the strategy

- *Strategy describes our ambitions for next 20 years*
- *4 Year Delivery Plans*
- *Build upon strong history of partnership working*
- *Long term housing needs and economic aspirations predicated on new Local Plan*
- *Continue co-operation with Leeds and Sheffield City Regions*
- *Monitor performance of the Delivery Plan via Strategic Housing Board (public and private sector)*



2015/16 Headlines

- Housing Growth - anticipating 650/800 target, but... 732 units granted via planning applications and circa 900 under construction!!
- Affordable Housing - 183 new affordable homes
- Council Housing Management - 5 year contract renewal with BH (89% Customer satisfaction, 98% rent collection, 96% decent)
- 19 long term empty homes returned to use
- Older and Vulnerable Persons Needs Assessment
- Housing Regeneration (Dearne Approach)
- Energy efficiency of 126 private sector homes improved under Better Homes Barnsley scheme



2016/17 Focus more on

- Housing Growth – Key regeneration schemes J36 & J37, alignment with employment and infrastructure
- Continue to find ways to deliver affordable housing for those who need it
- Direct Delivery – Longcar Lane development (32 units)
- HRA Residential Investment Fund to maximise housing growth opportunities (£14.3m)



And.....

- Energy Efficiency Programmes – deliver year 2 of Better Homes Barnsley scheme and finalise proposals for a (low cost) “Barnsley” energy tariff
- Increasing to number of empty homes returned to use
- Responding to Older and Vulnerable persons needs assessment
- Strengthening Housing and Health partnership to deliver better health outcomes on the front line and making better use of pooled resources



Thank You !

Any Questions ??



BARNLSLEY
Metropolitan Borough Council

This page is intentionally left blank